

## ULTRALITE CONTROLLER

### KEY FEATURES

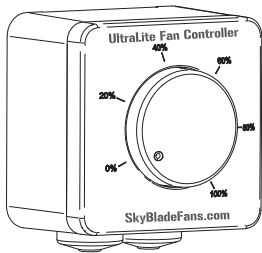


- Easily mounted to wall.
- Control each fan individually.
- Operate your fans for cooling and destratification.
- Manually control each fan's forward speed.

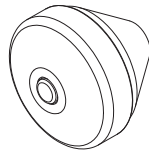
### TECHNICAL SPECIFICATIONS

<b>Power Supply</b>	0-10V DC analog from VFD
<b>Dimensions</b>	3.125" W x 3.125" H x 2.5" D
<b>Weight</b>	0.5 lb.
<b>Language Protocol</b>	0-10v signal
<b>User Interface</b>	Rotary dial
<b>Enclosure</b>	ASA Plastic
<b>Fans/Control</b>	Single fan control
<b>Power Consumption</b>	0.5W power consumption
<b>Connections</b>	5-core shielded wire, field supplied.
<b>Max Cable Length</b>	100 Ft.
<b>Rating</b>	IP44 (inset), IP54 (surface)

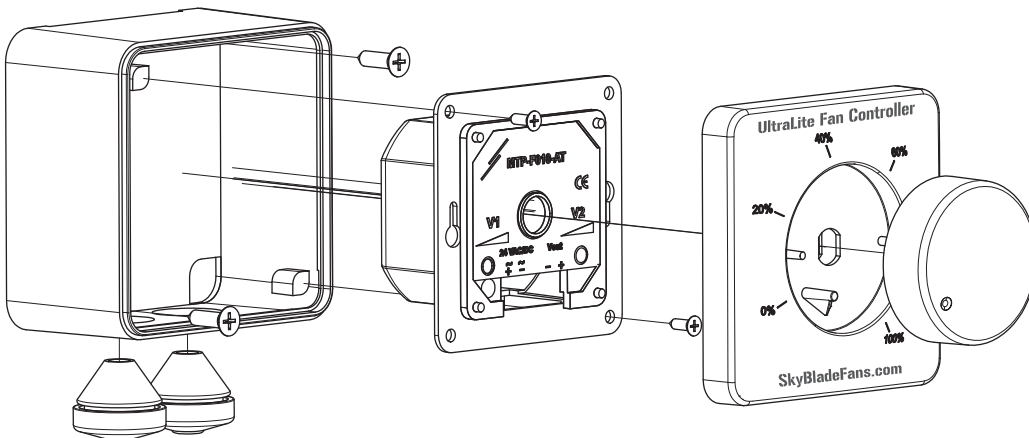
### ULTRALITE PACKAGE CONTENTS & ASSEMBLY



A. UltraLite Controller  
(x1)

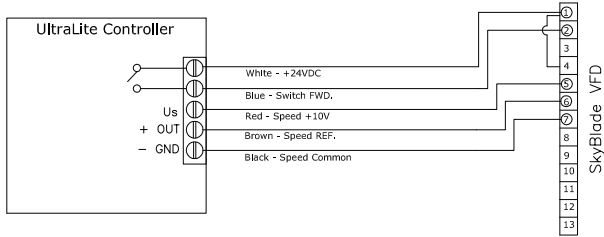


B. Plastic Bushing  
(x2)

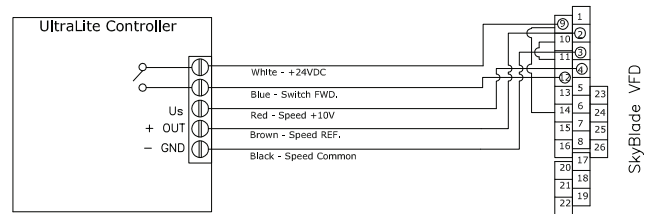


## WIRING DIAGRAM - GEARED DRIVE FAN

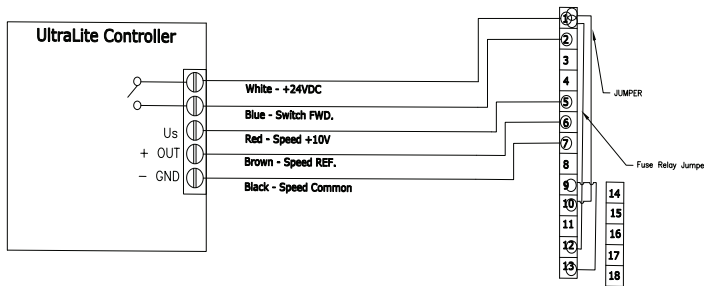
### 120V/1PH



### 230V/3PH, & 460V/3PH

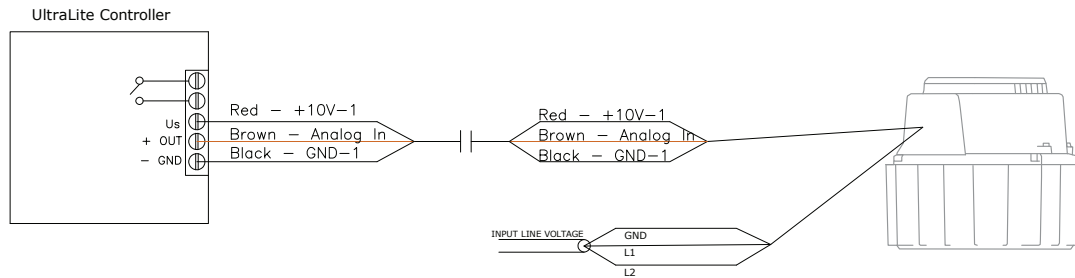


### 575V/3PH



## WIRING DIAGRAM - DIRECT DRIVE FAN

### 120V/1 PH & 230V/1PH



### 230V/3 PH & 460V/3 PH

